



54 Ewing Drive
Brantford, Ontario
N3R 5H8
519-751-2891
granderie.ca/confederation

Principal

Andrea Smith

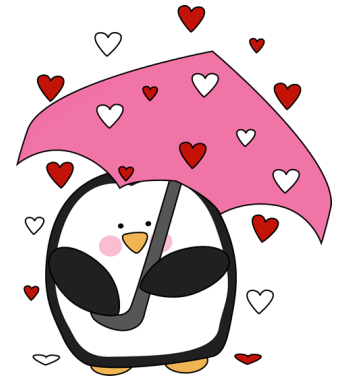
Vice Principal

Barkev Poladian

Office Coordinators

Angela Vandeven
Khryssa Genery

February/March février/mars 2021



Dear Confédération Families;

It's hard to believe that the first month of 2022 has past us by already, but here we are! Term 1 report cards will be sent home with students on February 7. The report card reflects the achievement prior to remote learning, as well as any additional strengths and accomplishments your child demonstrated during remote learning., and in the past few weeks of in person learning.

We thank you for your continued patience, flexibility, compassion, and kindness as we navigate these challenging times together. We wish all of our families a restful Family Day long weekend.

Yours in cooperation,

Mme A. Smith
Principal

M. Poladian
Vice-Principal

DATES TO REMEMBER:

Feb. 4- Final day for FI Kindergarten Registration for September 2022
Feb. 7-Term 1 Report Cards sent home
Feb. 14-Wear red or pink
Feb. 21-Family Day-No School
Feb. 22-Twin Day
Feb. 23-Pink Shirt Day

Spirit Days:

Feb. 14-Valentine's
Day: Wear red or pink

Feb. 22-Twosday: dress
matching a twin



Valentine's Day & COVID Protocols

Individual classrooms may participate in Valentine's themed activities within the classroom, at the teacher's discretion. Where permitted by the teacher, any Valentine's cards that will be distributed must be sent to school by Feb. 11 to meet the required quarantine time. In addition, any treats to be shared must be purchased, come in individual packages, and be at school February 11 to meet the required quarantine time.

We will have a Valentine's Day themed spirit day on Friday, February 14th. All staff and students are encouraged to wear pink or red

Parking Reminders

When picking students up on Coronation Drive, please remember:

- parking is only available on one side of the street
- parking is not permitted in the area directly in front of the stop sign
- do not use neighbour's driveways unless you have permission of the homeowner
- parking is not permitted in front of the fire hydrant

Signage is posted reminding families of the parking restrictions.

Winter Weather Guidelines

Time spent outdoors is an integral part of the school day. Children need fresh air and exercise and time spent outside affords students an opportunity to break free from the structure of the classroom. With the Canadian climate, time spent outside could mean anything from applying sunscreen to donning extra mittens and a hat, depending on the season. In the winter, it's important children come to school prepared for the cold. Boots, mittens or gloves and hats should be worn to school and it's a good idea for parents to provide extra mittens, socks, etc. in the event they are needed.



Borrowed Technology

If your family borrowed devices to use during remote learning, please send the device and charging cable to school as soon as possible. All of these devices belong to classrooms or the library and are needed for our in person instructional program.



School Council

School council will hold their next virtual meeting on February 16. We continue to organize fundraising for the school. See information regarding Mabel's Labels and Fundscript Gift Cards fundraisers attached to this newsletter. If you would like to attend, please contact the principal or vice-principal who can email you a link to join the meeting.

Inclement Weather

Download the BusPlanner App onto your phone to have delay and cancellation



BusPlanner Delays
BusPlanner
#49 in Weather
★★★★★ 3.8, 6 Ratings
Free

notifications. Download the app in the Apple App Store or the Google Play Store on your device and follow these instructions: [Bus Planner Delays](#)

On inclement weather days, the school building will be closed, however, your child will be able to access asynchronous learning activities from home through their teacher's Brightspace environment.

If, on an inclement weather day you feel that your child(ren) would be better off not taking the bus and either being transported into school by yourself or staying home altogether as a result of the road conditions at or near your home, STSBHN and the boards do understand and respect that this decision ultimately rests with you.



Labels for the stuff kids lose!



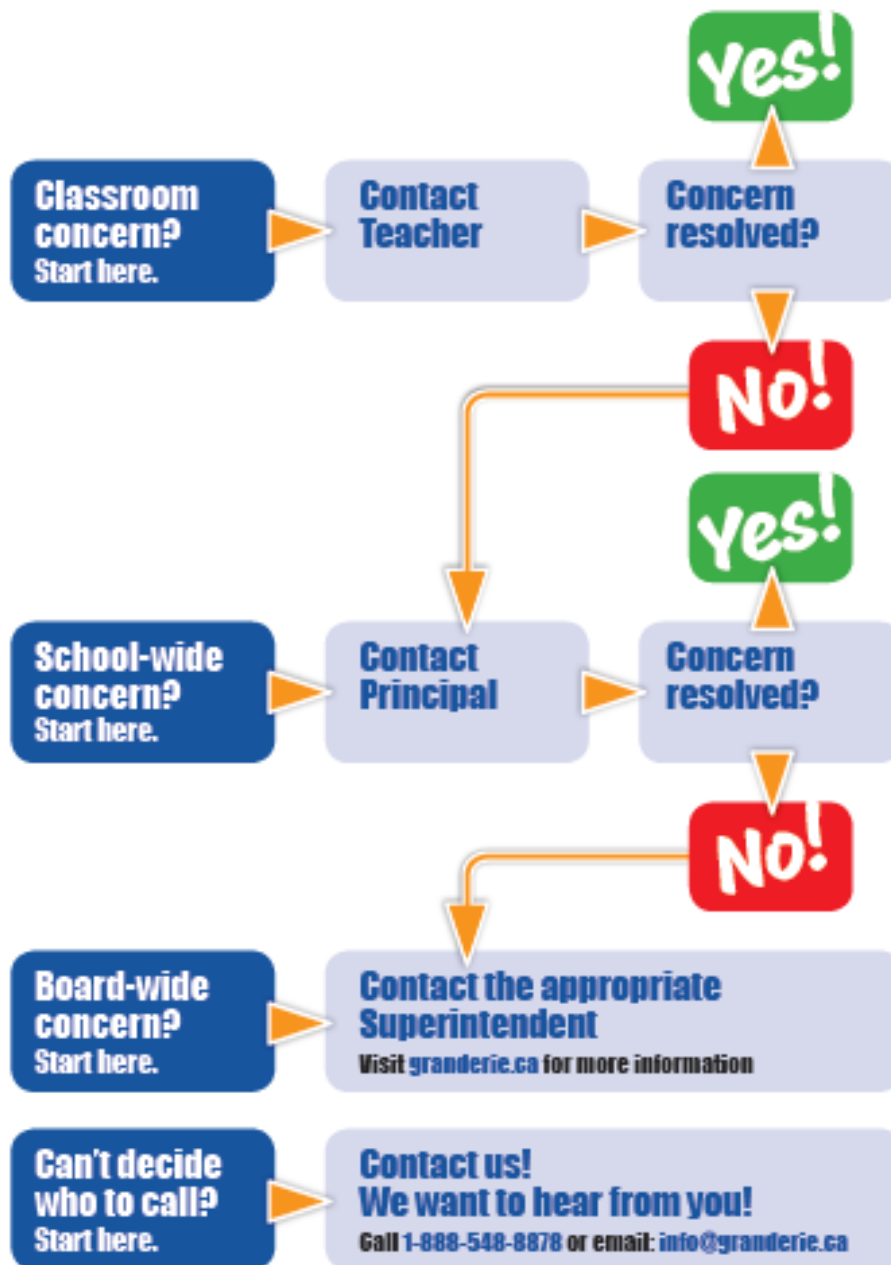
Be sure to label all your gear and supplies to help keep them out of the Lost & Found. Shop for durable, personalized labels and support our fundraiser!

mabel's labels
FUNDRAISING

Visit campaigns.mabelslabels.com
to support our organization.



How to Get Help with a Concern



Your trustee can guide you through this process