



Waterford Area Boundary Review – Public Meeting #1

Waterford Boundary Review Public Meeting #1: Agenda

- A-1
 - a) Welcome
 - b) Land Acknowledgment
 - c) Introductions
 - d) Setting the Stage
- B-1
 - a) Background
- C-1
 - a) Public Discussion
- D-1
 - a) Next Steps
- E-1
 - a) Adjournment
- F-1
 - a) Next Meeting





Waterford Boundary Review

Public Meeting #1: **Land Acknowledgement**

*The Grand Erie District School Board recognizes **Six Nations of the Grand River and Mississaugas of the Credit First Nation**, as the longstanding peoples of this territory. We honour, recognize, and respect these communities as well as all First Nations, Metis and Inuit Peoples who reside within the Grand Erie District School Board. We are all stewards of these lands and waters where we now gather, learn and play, and commit to working together in the spirit of Reconciliation*



Waterford Boundary Review

Public Meeting #1: **Background**

■ **Boundary Review : Purpose**

- Conduct a review of the attendance area of a school or group of schools within a specified review area of the Board
- Advise and provide recommendations to Board of Trustees on attendance area changes in review area
- School closures cannot be considered under a Boundary Review process



Waterford Boundary Review

Public Meeting #1: **Background**

- Residential development in the Town of Waterford has increased enrolment at Waterford Public School beyond capacity
 - Waterford Public School capacity 141%, 7 portables. Further increases are projected
- 2021-2022 Capital Priorities Program
 - Business case submitted to Ministry of Education requesting approval for a 6-classroom addition to Waterford Public School (\$3.2M)



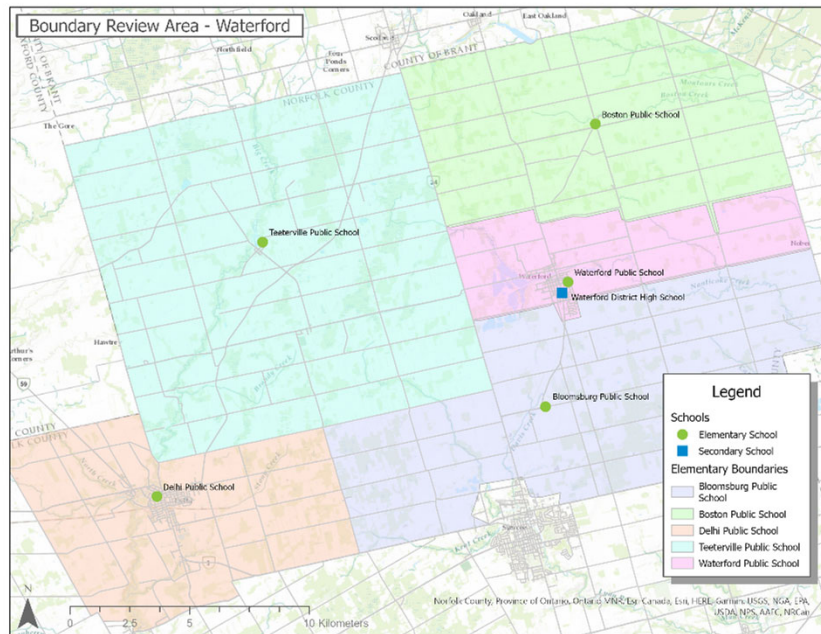
Waterford Boundary Review

Public Meeting #1: **Background**

- 2022-2023 Capital Priorities Program
 - Business case submitted to Ministry of Education requesting approval for a 6-classroom addition
- Neither request received funding approval
- June 2022 - GEDSB Board of Trustees approve Waterford Area (Norfolk Northwest) Boundary Review



Waterford Boundary Review Public Meeting #1: **Background**



Waterford Boundary Review Area

- Bloomsburg Public School
- Boston Public School
- Delhi Public School
- Teeterville Public School
- Waterford Public School
- Waterford District High School



Waterford Boundary Review Public Meeting #1: **Background**

Historic/Projected Enrolment

School	Capacity	Portables	Site Size (ac)	Enrolment														
				2018	2019	2020	2021	2022	2023	2024	2025	2026	2027	2028	2029	2030	2031	2032
Bloomsburg Public School	268	0	5.3	207	201	170	194	191	188	187	177	178	174	172	170	174	168	172
Boston Public School	233	0	3.5	188	190	166	204	199	197	192	186	183	178	183	185	188	184	182
Delhi Public School	412	0	4.9	421	422	286	387	376	375	381	387	395	410	414	419	427	433	443
Teeterville Public School	272	0	4.9	204	215	182	216	220	215	212	213	216	213	212	204	203	201	201
Waterford Public School	285	7	5.2	340	377	334	410	403	431	452	488	497	519	528	536	547	547	547
Waterford District High School	606	0	15.7	371	346	322	353	368	366	391	391	403	410	414	415	417	420	420
Total	2076	7	39.53	1731	1751	1460	1764	1757	1772	1815	1842	1872	1904	1923	1929	1956	1953	1965



Waterford Boundary Review Public Meeting #1: **Background**

Historic/Projected Capacity Utilization

School	Capacity	Portables	Site Size (ac)	Capacity Utilization														
				2018	2019	2020	2021	2022	2023	2024	2025	2026	2027	2028	2029	2030	2031	2032
Bloomsburg Public School	268	0	5.3	77%	75%	63%	72%	71%	70%	70%	66%	66%	65%	64%	63%	65%	63%	64%
Boston Public School	233	0	3.5	81%	82%	71%	88%	85%	85%	82%	80%	79%	76%	79%	79%	81%	79%	78%
Delhi Public School	412	0	4.9	102%	102%	69%	94%	91%	91%	92%	94%	96%	100%	100%	102%	104%	105%	108%
Teeterville Public School	272	0	4.9	75%	79%	67%	79%	81%	79%	78%	78%	79%	78%	78%	75%	75%	74%	74%
Waterford Public School	285	7	5.2	119%	132%	117%	144%	141%	151%	159%	171%	174%	182%	185%	188%	192%	192%	192%
Waterford District High School	606	0	15.7	61%	57%	53%	58%	61%	60%	65%	65%	66%	68%	68%	69%	69%	69%	69%
Total	2076	7	39.53	86%	88%	74%	89%	88%	89%	91%	92%	94%	95%	96%	96%	97%	97%	97%



Waterford Boundary Review Public Meeting #1: **Background**

Historic/Projected Surplus Space

School	Capacity	Portables	Site Size (ac)	Surplus Space														
				2018	2019	2020	2021	2022	2023	2024	2025	2026	2027	2028	2029	2030	2031	2032
Bloomsburg Public School	268	0	5.3	61	67	98	74	77	80	81	91	90	94	96	98	94	100	96
Boston Public School	233	0	3.5	45	43	67	29	34	36	41	47	50	55	50	48	45	49	51
Delhi Public School	412	0	4.9	-9	-10	126	25	36	37	31	25	17	2	-2	-7	-15	-21	-31
Teeterville Public School	272	0	4.9	68	57	90	56	52	57	60	59	56	59	60	68	69	71	71
Waterford Public School	285	7	5.2	-55	-92	-49	-125	-118	-146	-167	-203	-212	-234	-243	-251	-262	-262	-262
Waterford District High School	606	0	15.7	236	260	284	253	238	240	215	215	203	196	192	191	189	186	186
Total	2076	7	39.53	346	325	616	312	319	304	261	234	204	172	153	147	120	123	111



Waterford Boundary Review

Public Meeting #1: **Background**

Accommodation Options

1. Excess Waterford Public School enrolment accommodated at Waterford District High School.
 - Some combination of Junior/Intermediate grades accommodated at Waterford District High School as a 'school-within-a-school'
2. Excess Waterford Public School enrolment accommodated at surrounding area schools
3. Others?



Waterford Boundary Review Public Meeting #1: **Background**

Waterford Public School Enrolment Projections

Year	Grade										Total
	JK	SK	1	2	3	4	5	6	7	8	
2018	35	30	36	31	38	31	42	39	25	33	340
2019	52	43	30	41	28	40	33	44	39	27	377
2020	26	44	41	28	39	27	33	24	38	34	334
2021	41	39	54	50	34	51	29	37	28	47	410
2022	36	49	41	49	48	33	50	27	44	26	403
2023	40	38	51	42	51	49	35	51	29	45	431
2024	45	42	41	53	45	52	51	38	53	32	452
2025	47	47	46	44	55	47	55	53	40	54	488
2026	48	49	49	48	46	56	49	56	55	41	497
2027	48	50	51	50	50	47	58	51	58	56	519
2028	50	50	52	52	52	51	49	60	53	59	528
2029	52	52	52	53	54	53	53	51	62	54	536
2030	50	54	54	53	55	55	55	55	53	63	547
2031	49	52	55	55	55	56	57	57	57	54	547
2032	52	51	52	55	55	55	56	57	57	57	547

Accommodation Option 1

- Grade 7-8 population:
74 to 114 students
(2023-2032)
- Grade 6-8 population:
125 to 171 students
(2023-2032)



Waterford Boundary Review Public Meeting #1: Background

Accommodation Option 2

School	Capacity	Portables	Site Size (ac)	Surplus Space														
				2018	2019	2020	2021	2022	2023	2024	2025	2026	2027	2028	2029	2030	2031	2032
Bloomsburg Public School	268	0	5.3	61	67	98	74	77	80	81	91	90	94	96	98	94	100	96
Boston Public School	233	0	3.5	45	43	67	29	34	36	41	47	50	55	50	48	45	49	51
Delhi Public School	412	1	4.9	-9	-10	126	25	36	37	31	25	17	2	-2	-7	-15	-21	-31
Teeterville Public School	272	0	4.9	68	57	90	56	52	57	60	59	56	59	60	68	69	71	71
Waterford Public School	285	6	5.2	-55	-92	-49	-125	-118	-146	-167	-203	-212	-234	-243	-251	-262	-262	-262
Waterford District High School	606	0	15.7	236	260	284	253	238	240	215	215	203	196	192	191	189	186	186
Total	2076	7	39.53	346	325	616	312	319	304	261	234	204	172	153	147	120	123	111

- Bloomsburg, Teeterville, Boston Public Schools have/projected to have some surplus space that could take some excess Waterford Public school enrolment
- Transportation required



Please submit comments and questions to
planning@granderie.ca

Thank you!