



**Waterford Area Boundary  
Review – Special AdHoc  
Committee #1**

# Boundary Review Special Ad Hoc Committee: **Agenda**

- Welcome/Introductions
- BRSAC Terms of Reference
- Boundary Review
  - Background
  - Current situation/enrolment projections
  - Accommodation options
  - Future meeting dates
  - Round table





# Boundary Review Special Ad Hoc Committee.

## Welcome/Introductions

- Superintendent of Education – Wayne Baker (Chair)
- Area Trustees
  - Don Werden
  - Eva Dixon
- Superintendent of Business – Rafal Wyszynski
- School Principals
  - Bloomsberg Public School – Samantha Nicholson
  - Boston Public School – Tracy Rodrigues
  - Delhi Public School – Ian Summers
  - Teeterville Public School – Linda Butler
  - Waterford Public School – Adrienne Cunningham
  - Waterford District Highschool – John Della Fortuna
- Planning Supervisor – Nathan Hercanuck
- Planning Officer – TBD (vacant)



# Boundary Review Special Ad Hoc Committee: Terms of Reference

## ■ Purpose

- Conduct a review of the attendance area of a school or group of schools within a specified review area of the Board
- Advise and provide recommendations to Board of Trustees on attendance area changes in review area
- School closures cannot be considered under a Boundary Review process



## Boundary Review Special Ad Hoc Committee: Terms of Reference

### ■ Membership

- Superintendent of Education responsible for the identified school(s) (chair)
- Planning Supervisor
- Planning Officer
- Principal of the identified school(s)
- Up to two School Council Representatives of the identified schools
- Two Trustees
- Superintendent of Business



# Boundary Review Special Ad Hoc Committee: Terms of Reference

## ■ Responsibilities

- Review Objectives
- Public information and access
- Boundary options
- Community consultation and public meetings
- Report to Finance Committee



# Boundary Review Special Ad Hoc Committee: Terms of Reference

## ■ Meeting Procedures

- An initial meeting schedule will be established by Board staff; changes to meetings including adding or cancelling meeting dates may be made by the BRSAC.
- BRSAC meetings are not public meetings. Non-members may attend meetings provided they are invited by the BRSAC.
- Minutes will be taken at each meeting and approved at subsequent BRSAC meetings.
- BRSAC meeting minutes and presentation materials will be posted on the Board's website after minutes approval at subsequent BRSAC meeting.
- Public Meeting materials will be posted on the Board's website for public consumption prior to the public meeting. Public Meeting minutes will be posted on the Board's website after review and approval by the BRSAC, at the next BRSAC meeting.



# Boundary Review Special Ad Hoc Committee: Terms of Reference

## **GEDSB Boundary Review Reference Criteria:**

Where possible, boundary options should take into consideration:

### Grade Configuration

- JK-8, and 9-12 are preferred school organizations. However, other school organizations (such as 7-12, JK-12) will be considered based on current enrolment and projected enrolment, school utilization, facility condition and program (ex. French Immersion, Special Education, etc.), and other factors.





# Boundary Review Special Ad Hoc Committee: Terms of Reference

## GEDSB Boundary Review Reference Criteria:

Where possible, boundary options should take into consideration:

### School Utilization

- maximize the use of existing facilities and minimize the number of students in portables or temporary structures.
- maximize the number of facilities that adequately meet student and community needs for accessibility.
- Consider the equity of facilities, site, size and program standards.
- All facilities should provide safe and secure learning environments for all students and staff.



# Boundary Review Special Ad Hoc Committee: Terms of Reference

## **GEDSB Boundary Review Reference Criteria:**

Where possible, boundary options should take into consideration:

Program offerings

- Maximize access to and equity of program offerings (i.e. French Immersion, Special Education, etc.)
- Minimize the number of combined grades at a school.



# Boundary Review Special Ad Hoc Committee: Terms of Reference

## **GEDSB Boundary Review Reference Criteria:**

Where possible, boundary options should take into consideration:

### Transportation

- Maximize the number of students within a school boundary who are within walking distance, minimizing the need for transportation and annual operating costs.

### Transitions

- Minimize the number of transitions for students where changes are proposed.



# Boundary Review Special Ad Hoc Committee.

## Background

- Residential development in the Town of Waterford has increased enrolment at Waterford Public School beyond capacity
  - Waterford Public School capacity 141%, 7 portables. Further increases projected
- 2021-2022 Capital Priorities Program
  - Business case submitted to Ministry of Education requesting approval for 6 classroom addition to Waterford Public School (\$3.2M)

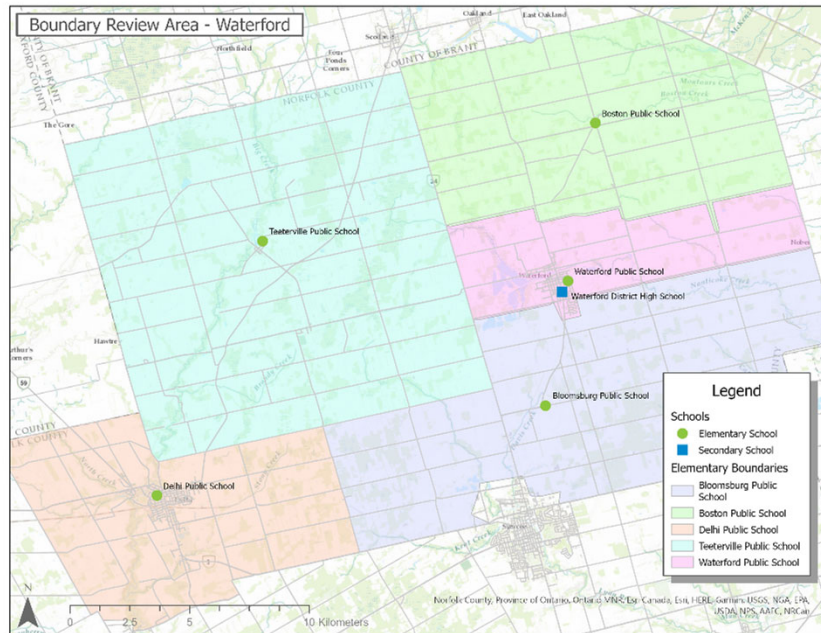


# Boundary Review Special Ad Hoc Committee.

## Background

- 2022-2023 Capital Priorities Program
  - Business case submitted to Ministry of Education requesting approval for 6 classroom addition
- Neither request received funding approval
- June 2022 - GEDSB Board of Trustees approve Waterford Area (Norfolk Northwest) Boundary Review

# Boundary Review Special Ad Hoc Committee. Current Situation/Projections



- Bloomsburg Public School
- Boston Public School
- Delhi Public School
- Teeterville Public School
- Waterford Public School
- Waterford District High School



# Boundary Review Special Ad Hoc Committee.

## Current Situation/Projections

School	Capacity	Portables	Site Size (ac)	Enrolment														
				2018	2019	2020	2021	2022	2023	2024	2025	2026	2027	2028	2029	2030	2031	2032
Bloomsburg Public School	268	0	5.3	207	201	170	194	191	188	187	177	178	174	172	170	174	168	172
Boston Public School	233	0	3.5	188	190	166	204	199	197	192	186	183	178	183	185	188	184	182
Delhi Public School	412	0	4.9	421	422	286	387	376	375	381	387	395	410	414	419	427	433	443
Teeterville Public School	272	0	4.9	204	215	182	216	220	215	212	213	216	213	212	204	203	201	201
Waterford Public School	285	7	5.2	340	377	334	410	403	431	452	488	497	519	528	536	547	547	547
Waterford District High School	606	0	15.7	371	346	322	353	368	366	391	391	403	410	414	415	417	420	420
<b>Total</b>	<b>2076</b>	<b>7</b>	<b>39.53</b>	<b>1731</b>	<b>1751</b>	<b>1460</b>	<b>1764</b>	<b>1757</b>	<b>1772</b>	<b>1815</b>	<b>1842</b>	<b>1872</b>	<b>1904</b>	<b>1923</b>	<b>1929</b>	<b>1956</b>	<b>1953</b>	<b>1965</b>



# Boundary Review Special Ad Hoc Committee. Current Situation/Projections

School	Capacity	Portables	Site Size (ac)	Capacity Utilization														
				2018	2019	2020	2021	2022	2023	2024	2025	2026	2027	2028	2029	2030	2031	2032
Bloomsburg Public School	268	0	5.3	77%	75%	63%	72%	71%	70%	70%	66%	66%	65%	64%	63%	65%	63%	64%
Boston Public School	233	0	3.5	81%	82%	71%	88%	85%	85%	82%	80%	79%	76%	79%	79%	81%	79%	78%
Delhi Public School	412	0	4.9	102%	102%	69%	94%	91%	91%	92%	94%	96%	100%	100%	102%	104%	105%	108%
Teeterville Public School	272	0	4.9	75%	79%	67%	79%	81%	79%	78%	78%	79%	78%	78%	75%	75%	74%	74%
Waterford Public School	285	7	5.2	119%	132%	117%	144%	141%	151%	159%	171%	174%	182%	185%	188%	192%	192%	192%
Waterford District High School	606	0	15.7	61%	57%	53%	58%	61%	60%	65%	65%	66%	68%	68%	69%	69%	69%	69%
<b>Total</b>	<b>2076</b>	<b>7</b>	<b>39.53</b>	<b>86%</b>	<b>88%</b>	<b>74%</b>	<b>89%</b>	<b>88%</b>	<b>89%</b>	<b>91%</b>	<b>92%</b>	<b>94%</b>	<b>95%</b>	<b>96%</b>	<b>96%</b>	<b>97%</b>	<b>97%</b>	<b>97%</b>





# Boundary Review Special Ad Hoc Committee. Current Situation/Projections

School	Capacity	Portables	Site Size (ac)	Surplus Space														
				2018	2019	2020	2021	2022	2023	2024	2025	2026	2027	2028	2029	2030	2031	2032
Bloomsburg Public School	268	0	5.3	61	67	98	74	77	80	81	91	90	94	96	98	94	100	96
Boston Public School	233	0	3.5	45	43	67	29	34	36	41	47	50	55	50	48	45	49	51
Delhi Public School	412	0	4.9	-9	-10	126	25	36	37	31	25	17	2	-2	-7	-15	-21	-31
Teeterville Public School	272	0	4.9	68	57	90	56	52	57	60	59	56	59	60	68	69	71	71
Waterford Public School	285	7	5.2	-55	-92	-49	-125	-118	-146	-167	-203	-212	-234	-243	-251	-262	-262	-262
Waterford District High School	606	0	15.7	236	260	284	253	238	240	215	215	203	196	192	191	189	186	186
<b>Total</b>	<b>2076</b>	<b>7</b>	<b>39.53</b>	<b>346</b>	<b>325</b>	<b>616</b>	<b>312</b>	<b>319</b>	<b>304</b>	<b>261</b>	<b>234</b>	<b>204</b>	<b>172</b>	<b>153</b>	<b>147</b>	<b>120</b>	<b>123</b>	<b>111</b>



## Boundary Review Special Ad Hoc Committee. Accommodation Options

1. Excess Waterford Public School enrolment accommodated at Waterford District High School.
  - Some combination of Junior/Intermediate grades accommodated at Waterford District High School
2. Excess Waterford Public School enrolment accommodated at surrounding area schools
3. Others?



# Boundary Review Special Ad Hoc Committee.

## Accomodation Option 1

### Waterford Public School Enrolment Projections

Year	Grade										Total
	JK	SK	1	2	3	4	5	6	7	8	
2018	35	30	36	31	38	31	42	39	25	33	340
2019	52	43	30	41	28	40	33	44	39	27	377
2020	26	44	41	28	39	27	33	24	38	34	334
2021	41	39	54	50	34	51	29	37	28	47	410
2022	36	49	41	49	48	33	50	27	44	26	403
2023	40	38	51	42	51	49	35	51	29	45	431
2024	45	42	41	53	45	52	51	38	53	32	452
2025	47	47	46	44	55	47	55	53	40	54	488
2026	48	49	49	48	46	56	49	56	55	41	497
2027	48	50	51	50	50	47	58	51	58	56	519
2028	50	50	52	52	52	51	49	60	53	59	528
2029	52	52	52	53	54	53	53	51	62	54	536
2030	50	54	54	53	55	55	55	55	53	63	547
2031	49	52	55	55	55	56	57	57	57	54	547
2032	52	51	52	55	55	55	56	57	57	57	547

- Grade 7-8 population: 74 to 114 students (2023-2032)
- Grade 6-8 population: 125 to 171 students (2023-2032)



# Boundary Review Special Ad Hoc Committee.

## Accommodation Option 2

School	Capacity	Portables	Site Size (ac)	Surplus Space														
				2018	2019	2020	2021	2022	2023	2024	2025	2026	2027	2028	2029	2030	2031	2032
Bloomsburg Public School	268	0	5.3	61	67	98	74	77	80	81	91	90	94	96	98	94	100	96
Boston Public School	233	0	3.5	45	43	67	29	34	36	41	47	50	55	50	48	45	49	51
Delhi Public School	412	1	4.9	-9	-10	126	25	36	37	31	25	17	2	-2	-7	-15	-21	-31
Teeterville Public School	272	0	4.9	68	57	90	56	52	57	60	59	56	59	60	68	69	71	71
Waterford Public School	285	6	5.2	-55	-92	-49	-125	-118	-146	-167	-203	-212	-234	-243	-251	-262	-262	-262
Waterford District High School	606	0	15.7	236	260	284	253	238	240	215	215	203	196	192	191	189	186	186
<b>Total</b>	<b>2076</b>	<b>7</b>	<b>39.53</b>	<b>346</b>	<b>325</b>	<b>616</b>	<b>312</b>	<b>319</b>	<b>304</b>	<b>261</b>	<b>234</b>	<b>204</b>	<b>172</b>	<b>153</b>	<b>147</b>	<b>120</b>	<b>123</b>	<b>111</b>

- Bloomsburg, Teeterville, Boston Public Schools have/projected to have some surplus space
- Transportation required



## Boundary Review Special Ad Hoc Committee. Future Meeting Dates (for discussion)

- Early October - Public Meeting #1
- Late October - Special Ad Hoc Committee Meeting #2
- Mid November - Special Ad Hoc Committee Meeting #3
- Mid December - Public Meeting #2
- Early January - Special Ad Hoc Committee Meeting #4



# Boundary Review Special Ad Hoc Committee.

## Future Meeting Dates: Draft Agendas

- Public Meeting #1 (virtual with accommodations as necessary)
  - BRSAC Terms of Reference
  - Boundary Review
  - Background
  - Current situation/enrolment projections
  - Accommodation options
  - Future meeting dates
  - Round table



## Boundary Review Special Ad Hoc Committee. Future Meeting Dates: Draft Agendas

- Special Ad Hoc Committee Meeting #2
  - Review feedback from Public Meeting #1
  - Draft Objectives discussion
  - Solutions/Scenario discussion



# Boundary Review Special Ad Hoc Committee.

## Future Meeting Dates: Draft Agendas

- Special Ad Hoc Committee Meeting #3
  - Objectives finalization
  - Solutions/Scenario discussion
  - Confirm Preferred Scenario
  - Discuss transition considerations (legacy considerations)





# Boundary Review Special Ad Hoc Committee.

## Future Meeting Dates: Draft Agendas

- Public Meeting #2 (virtual with accommodations as necessary)
  - Objectives
  - Present Preferred Scenario
    - Transition considerations (legacy considerations)



## Boundary Review Special Ad Hoc Committee. Future Meeting Dates: Draft Agendas

- Special Ad Hoc Committee Meeting #4
  - Review feedback from Public Meeting #2
  - Finalize Preferred Scenario for Report to Finance Committee
    - Transition considerations (legacy considerations)



# Boundary Review Special Ad Hoc Committee. Round Table Discussion





**Please submit comments and questions to**  
**[planning@granderie.ca](mailto:planning@granderie.ca)**

**Thank you!**