



**Waterford Area Boundary
Review – Special AdHoc
Committee #2**



Boundary Review Special Ad Hoc Committee: Agenda

- | | | |
|-------|--|---|
| A - 1 | Opening (a) Welcome (b) Land Acknowledgement Statement | W. Baker R. Wyszynski |
| B - 1 | Approval of Minutes (a) BRSAC Meeting #1 (b) Public Meeting #1 | W. Baker |
| C - 1 | Boundary Review Objective * (a) Reference Criteria | N. Hercanuck |
| D - 1 | Business Arising from Minutes * (a) Accommodation options identified at public meeting (b) How many portables are manageable at Waterford Public School site? (c) Accommodate grade 7 and 8 students from surrounding schools at Waterford District High School? (d) Determine the number of students attending Waterford Public School who do not live within the town of Waterford. | W. Baker A. Cunningham N. Hercanuck N. Hercanuck |
| E - 1 | Adjournment | |
| F - 1 | Next Meeting Tuesday, November 8, 2022 | |



Boundary Review Special Ad Hoc Committee: Previous Minutes

For approval:

- Waterford Boundary Review BRSAC Meeting #1
- Waterford Boundary Review Public Meeting #1

Minutes will be posted to the website after approval by the BRSAC



Boundary Review Special Ad Hoc Committee: Reference Criteria/Review Objectives

Grade Configuration

- JK-8, and 9-12 are preferred school organizations. However, other school organizations (such as 7-12, JK-12) will be considered based on current enrolment and projected enrolment, school utilization, facility condition and program (ex. French Immersion, Special Education, etc.), and other factors.



Boundary Review Special Ad Hoc Committee: Reference Criteria/Review Objectives

School Utilization

- maximize the use of existing facilities and minimize the number of students in portables or temporary structures.
- maximize the number of facilities that adequately meet student and community needs for accessibility.
- Consider the equity of facilities, site, size and program standards.
- All facilities should provide safe and secure learning environments for all students and staff.



Boundary Review Special Ad Hoc Committee: Reference Criteria/Review Objectives

Program offerings

- Maximize access to and equity of program offerings (i.e. French Immersion, Special Education, etc.)
- Minimize the number of combined grades at a school.



Boundary Review Special Ad Hoc Committee: Reference Criteria/Review Objectives

Transportation

- Maximize the number of students within a school boundary who are within walking distance, minimizing the need for transportation and annual operating costs.

Transitions

- Minimize the number of transitions for students where changes are proposed.



Boundary Review Special Ad Hoc Committee. Accommodation Options

1. Accommodate excess enrolment (some combination of Junior/Intermediate grades) from Waterford Elementary School at Waterford District Secondary School (school within a school model).
2. Accommodate some combination of Junior/Intermediate grades from Waterford Elementary School **and surrounding area schools** at Waterford District Secondary School (school within a school model).
3. Accommodate excess from Waterford Elementary School at surrounding area schools with space.



Boundary Review Special Ad Hoc Committee. Waterford Elementary School – right size discussion

- Waterford Elementary School current enrolment - 403 students.
- School capacity (permanent) - 285 pupil places
- 7 portables on site



Boundary Review Special Ad Hoc Committee. Accommodation option 2

- Accommodate some combination of Junior/Intermediate grades from Waterford Elementary School **and surrounding area schools** at Waterford District Secondary School (school within a school model).



Boundary Review Special Ad Hoc Committee.

Accomodation option 2

| School | Capacity | Portables | Site Size (ac) | Enrolment | | | | | | | | | | | | | | |
|---|-------------|-----------|----------------|-------------|-------------|-------------|-------------|-------------|-------------|-------------|-------------|-------------|-------------|-------------|-------------|-------------|-------------|-------------|
| | | | | 2018 | 2019 | 2020 | 2021 | 2022 | 2023 | 2024 | 2025 | 2026 | 2027 | 2028 | 2029 | 2030 | 2031 | 2032 |
| Bloomsburg Public School | 268 | 0 | 5.3 | 207 | 201 | 170 | 194 | 157 | 148 | 147 | 142 | 140 | 134 | 134 | 129 | 135 | 137 | 140 |
| Boston Public School | 233 | 0 | 3.5 | 188 | 190 | 166 | 204 | 159 | 150 | 147 | 146 | 151 | 149 | 151 | 142 | 140 | 145 | 145 |
| Delhi Public School | 412 | 0 | 4.9 | 421 | 422 | 286 | 387 | 296 | 291 | 294 | 311 | 316 | 319 | 332 | 344 | 354 | 357 | 363 |
| Teeterville Public School | 272 | 0 | 4.9 | 204 | 215 | 182 | 216 | 171 | 172 | 176 | 173 | 172 | 164 | 163 | 161 | 161 | 160 | 160 |
| Waterford Public School | 285 | 7 | 5.2 | 340 | 377 | 334 | 410 | 333 | 357 | 367 | 394 | 401 | 405 | 416 | 420 | 431 | 436 | 433 |
| Waterford District High School (Gr. 9-12) | 606 | 0 | 15.7 | 371 | 346 | 322 | 353 | 368 | 366 | 391 | 391 | 403 | 410 | 414 | 415 | 417 | 420 | 420 |
| Waterford District High School (Elementary) | | | | | | | | 273 | 288 | 293 | 285 | 289 | 323 | 313 | 318 | 318 | 298 | 304 |
| Total | 2076 | 7 | 39.53 | 1731 | 1751 | 1460 | 1764 | 1757 | 1772 | 1815 | 1842 | 1872 | 1904 | 1923 | 1929 | 1956 | 1953 | 1965 |



Boundary Review Special Ad Hoc Committee.

Accomodation option 2

| School | Capacity | Portables | Site Size (ac) | Capacity Utilization | | | | | | | | | | | | | | |
|---|-------------|-----------|----------------|----------------------|------------|------------|------------|------------|------------|------------|------------|------------|------------|------------|------------|------------|------------|------------|
| | | | | 2018 | 2019 | 2020 | 2021 | 2022 | 2023 | 2024 | 2025 | 2026 | 2027 | 2028 | 2029 | 2030 | 2031 | 2032 |
| Bloomsburg Public School | 268 | 0 | 5.3 | 77% | 75% | 63% | 72% | 59% | 55% | 55% | 53% | 52% | 50% | 50% | 48% | 50% | 51% | 52% |
| Boston Public School | 233 | 0 | 3.5 | 81% | 82% | 71% | 88% | 68% | 64% | 63% | 63% | 65% | 64% | 65% | 61% | 60% | 62% | 62% |
| Delhi Public School | 412 | 0 | 4.9 | 102% | 102% | 69% | 94% | 72% | 71% | 71% | 75% | 77% | 77% | 81% | 83% | 86% | 87% | 88% |
| Teeterville Public School | 272 | 0 | 4.9 | 75% | 79% | 67% | 79% | 63% | 63% | 65% | 64% | 63% | 60% | 60% | 59% | 59% | 59% | 59% |
| Waterford Public School | 285 | 7 | 5.2 | 119% | 132% | 117% | 144% | 117% | 125% | 129% | 138% | 141% | 142% | 146% | 147% | 151% | 153% | 152% |
| Waterford District High School (Gr. 9-12) | 606 | 0 | 15.7 | 61% | 57% | 53% | 58% | 106% | 108% | 113% | 112% | 114% | 121% | 120% | 121% | 121% | 119% | 120% |
| Waterford District High School (Elementary) | | | | | | | | | | | | | | | | | | |
| Average | 2076 | 7 | 39.53 | 86% | 88% | 74% | 89% | 81% | 81% | 83% | 84% | 85% | 86% | 87% | 87% | 88% | 88% | 89% |

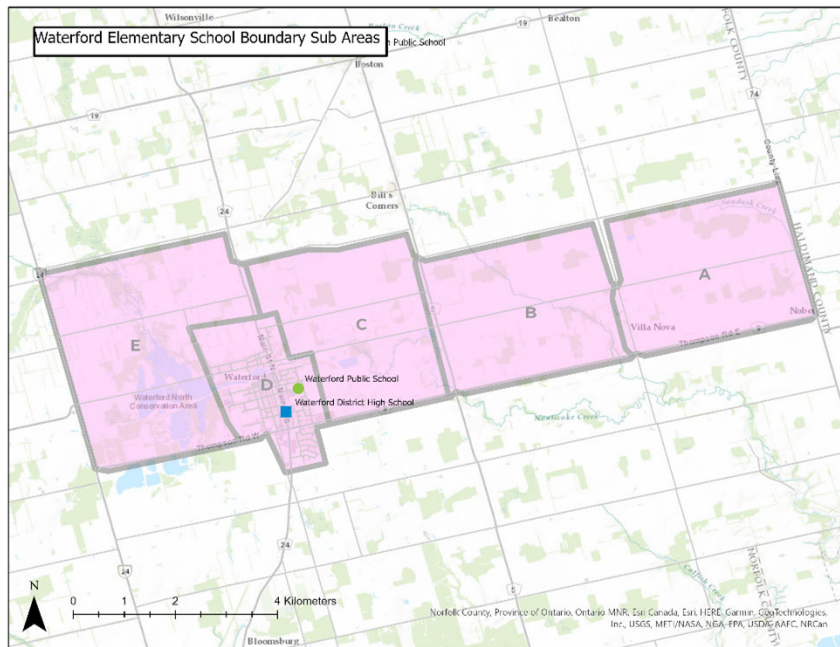


Boundary Review Special Ad Hoc Committee: Accommodation option 2

| School | Capacity | Portables | Site Size (ac) | Surplus Space | | | | | | | | | | | | | | |
|---|-------------|-----------|----------------|---------------|------------|------------|------------|------------|------------|------------|------------|------------|------------|------------|------------|------------|------------|------------|
| | | | | 2018 | 2019 | 2020 | 2021 | 2022 | 2023 | 2024 | 2025 | 2026 | 2027 | 2028 | 2029 | 2030 | 2031 | 2032 |
| Bloomsburg Public School | 268 | 0 | 5.3 | 61 | 67 | 98 | 74 | 111 | 120 | 121 | 126 | 128 | 134 | 134 | 139 | 133 | 131 | 128 |
| Boston Public School | 233 | 0 | 3.5 | 45 | 43 | 67 | 29 | 74 | 83 | 86 | 87 | 82 | 84 | 82 | 91 | 93 | 88 | 88 |
| Delhi Public School | 412 | 0 | 4.9 | -9 | -10 | 126 | 25 | 116 | 121 | 118 | 101 | 96 | 93 | 80 | 68 | 58 | 55 | 49 |
| Teeterville Public School | 272 | 0 | 4.9 | 68 | 57 | 90 | 56 | 101 | 100 | 96 | 99 | 100 | 108 | 109 | 111 | 111 | 112 | 112 |
| Waterford Public School | 285 | 7 | 5.2 | -55 | -92 | -49 | -125 | -48 | -72 | -82 | -109 | -116 | -120 | -131 | -135 | -146 | -151 | -148 |
| Waterford District High School (Gr. 9-12) | 606 | 0 | 15.7 | 236 | 260 | 284 | 253 | -35 | -48 | -78 | -70 | -86 | -127 | -121 | -127 | -129 | -112 | -118 |
| Waterford District High School (Elementary) | | | | | | | | | | | | | | | | | | |
| Total | 2076 | 7 | 39.53 | 346 | 325 | 616 | 312 | 319 | 304 | 261 | 234 | 204 | 172 | 153 | 147 | 120 | 123 | 111 |



Boundary Review Special Ad Hoc Committee: Waterford Elementary Boundary Enrolment



| Sub Area | Waterford Elementary Enrolment |
|--------------------|--------------------------------|
| A | 31 |
| B | 15 |
| C | 9 |
| D | 320 |
| E | 20 |
| Grand Total | *395 |

* 8 Waterford Public School students not included as they reside outside the boundary



**Next meeting:
Tuesday, November 8, 2022**

Please submit comments and questions to

planning@granderie.ca

Thank you!