



**Brantford East Area  
Boundary Review –  
Additional Committee  
Meeting**





# Boundary Review Special Ad Hoc Committee: Current Situation – School Spaces (2022 Actuals)

School	OTG	2022 Enrolment	Utilization	# of Portables (2022)
Central PS	190	240	126%	4
Echo Place PS	213	162	76%	0
King George PS	412	275	67%	0
Major Ballachey PS	400	322	81%	0
Woodman-Cainsville S	236	455	193%	9
<b>Total</b>	<b>1,451</b>	<b>1,454</b>	<b>100%</b>	<b>13</b>
<b>Pauline Johnson C &amp; VS</b>	<b>1,374</b>	<b>866</b>	<b>63%</b>	<b>0</b>

School	OTG	2022 Projected	Utilization	# of Portables (2022)
Central PS	190	194	102%	4
Echo Place PS	213	155	73%	0
King George PS	412	279	68%	0
Major Ballachey PS	400	304	76%	0
Woodman-Cainsville S	236	404	171%	9
<b>Total</b>	<b>1,451</b>	<b>1,336</b>	<b>92%</b>	<b>13</b>



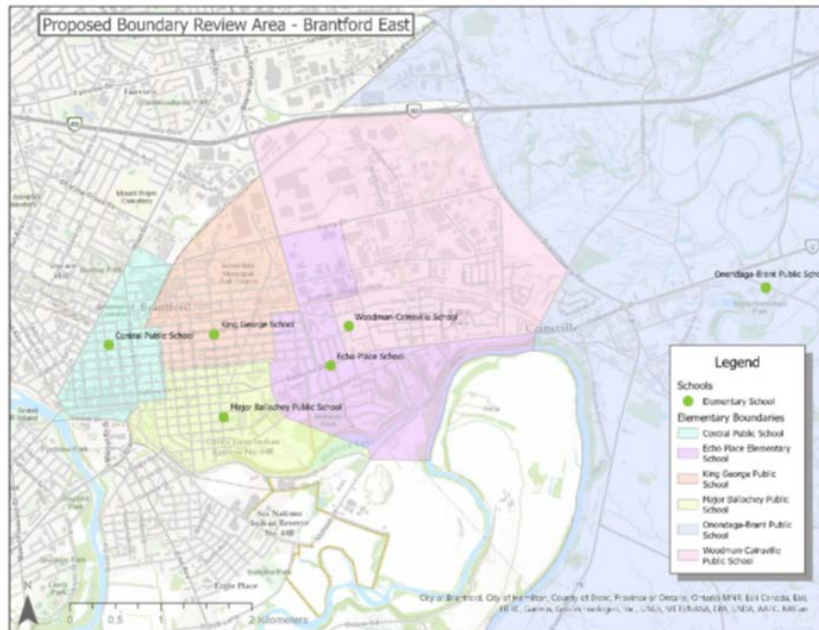
# Boundary Review Special Ad Hoc Committee: Current Situation – School Spaces (2021 Actuals)

School	Capacity	Portables	Site Size (ac)	Surplus Space														
				2018	2019	2020	2021	2022	2023	2024	2025	2026	2027	2028	2029	2030	2031	2032
Central Public School	190	3	2.42	-15	-23	3	-14	-4	-10	-15	-18	-18	-16	-32	-29	-66	-79	-73
Echo Place School	213	0	2.54	57	51	51	57	58	66	67	62	65	62	61	61	62	61	59
King George School	412	0	2.1	127	120	146	137	133	143	146	141	136	135	134	138	145	141	137
Major Ballachey Public School	400	0	1.84	70	83	117	88	96	79	57	50	43	33	-20	-27	-57	-60	-57
Woodman-Cainsville School	236	9	4.3	-101	-108	-132	-185	-168	-173	-202	-212	-224	-217	-217	-209	-200	-202	-203
<b>Total</b>	<b>1451</b>	<b>12</b>	<b>13.22</b>	<b>28</b>	<b>25</b>	<b>37</b>	<b>17</b>	<b>115</b>	<b>105</b>	<b>53</b>	<b>23</b>	<b>2</b>	<b>-3</b>	<b>-74</b>	<b>-66</b>	<b>-116</b>	<b>-139</b>	<b>-137</b>

Note: 1 additional portable has been moved to Central PS for 2022.



# Boundary Review Special Ad Hoc Committee: Existing Boundaries



## Brantford East Boundary Review Area

- Central Public School
- Echo Place School
- King George School
- Major Ballachey School
- Woodman-Cainsville School



# Boundary Review Special Ad Hoc Committee: Primary Options

## Boundary Changes

1. Excess Woodman-Cainsville enrolment accommodated at King George PS and boundary change with surrounding schools.

## Grade Structure Changes

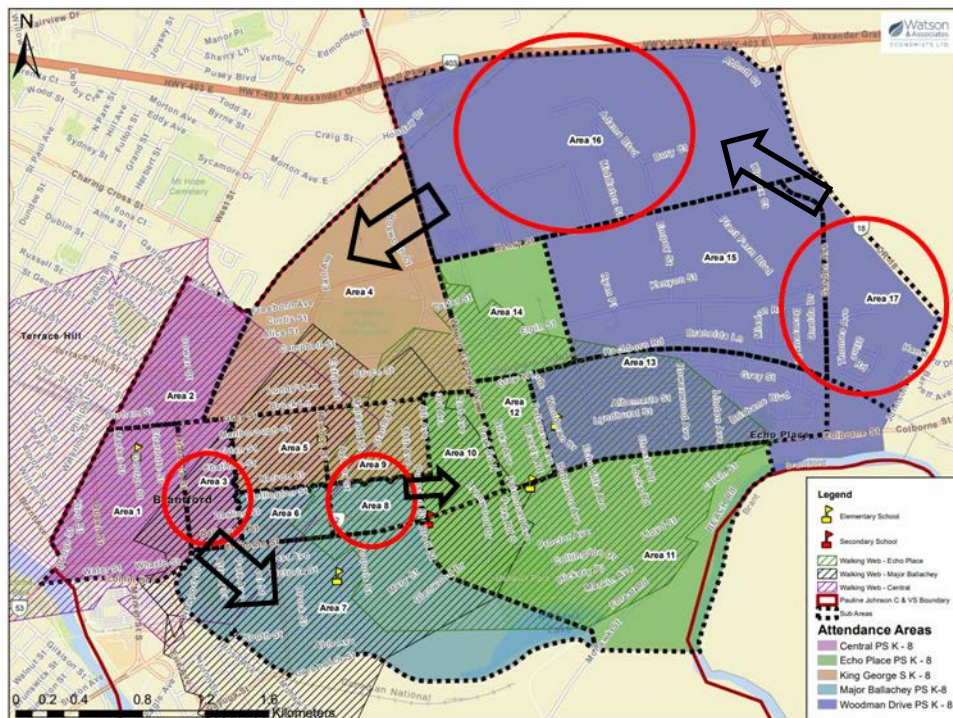
1. *Intermediate grades from Woodman-Cainsville and Central accommodated at Pauline Johnson C & VS.*
2. *Intermediate grades from all schools accommodated at Pauline Johnson C & VS.*
3. *Intermediate grades from all schools accommodated at Pauline Johnson C & VS and boundary changes.*

# Option 1a

## Boundary Change With Surrounding Schools (All of Woodman to KG)

Current Conditions				
School	OTG	2022 Enrolment	Utilization	# of Portables (2022)
Central PS	190	240	126%	4
Echo Place PS	213	162	76%	0
King George PS	412	275	67%	0
Major Ballachey PS	400	322	81%	0
Woodman-Cainsville S	236	455	193%	9
<b>Total</b>	<b>1,451</b>	<b>1,454</b>	<b>100%</b>	<b>13</b>
<b>Pauline Johnson C &amp; VS</b>	<b>1,374</b>	<b>866</b>	<b>63%</b>	<b>0</b>

Proposed Conditions				
School	OTG	2022 Enrolment	Utilization	# of Portables (2022)
Central PS	190	192	101%	0
Echo Place PS	213	227	107%	1
King George PS	412	448	109%	2
Major Ballachey PS	400	305	76%	0
Woodman-Cainsville S	236	282	119%	2
<b>Total</b>	<b>1,451</b>	<b>1,454</b>	<b>100%</b>	<b>5</b>
<b>Pauline Johnson C &amp; VS</b>	<b>1,374</b>	<b>866</b>	<b>63%</b>	<b>0</b>

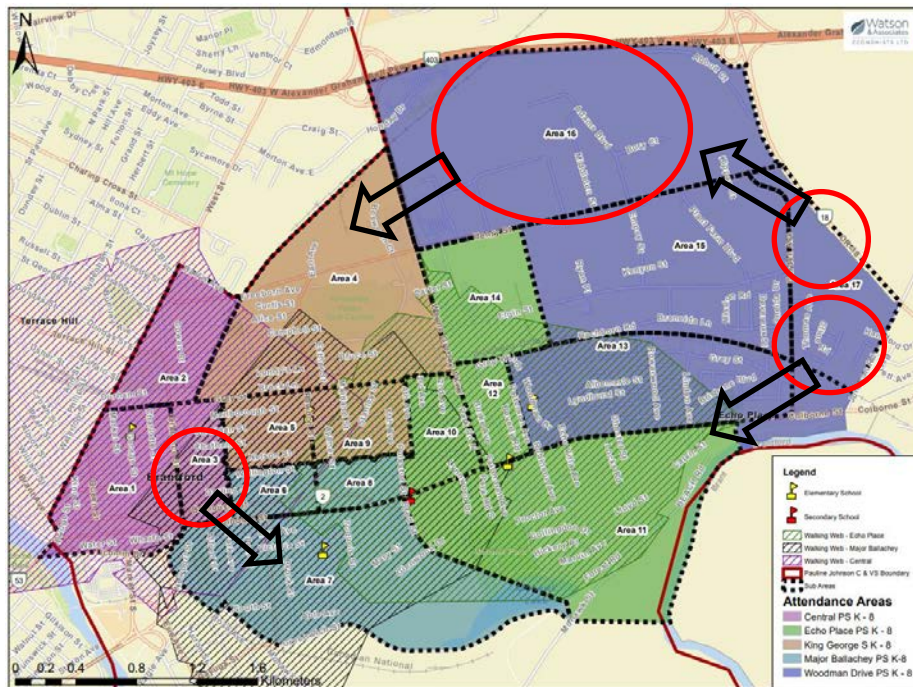


# Option 1b

## Boundary Change (Woodman Split Between KG/EP)

Current Conditions				
School	OTG	2022 Enrolment	Utilization	# of Portables (2022)
Central PS	190	240	126%	4
Echo Place PS	213	162	76%	0
King George PS	412	275	67%	0
Major Ballachey PS	400	322	81%	0
Woodman-Cainsville S	236	455	193%	9
<b>Total</b>	<b>1,451</b>	<b>1,454</b>	<b>100%</b>	<b>13</b>
<b>Pauline Johnson C &amp; VS</b>	<b>1,374</b>	<b>866</b>	<b>63%</b>	<b>0</b>

Proposed Conditions				
School	OTG	2022 Enrolment	Utilization	# of Portables (2022)
Central PS	190	192	101%	0
Echo Place PS	213	246	115%	2
King George PS	412	364	88%	0
Major Ballachey PS	400	370	93%	0
Woodman-Cainsville S	236	282	119%	2
<b>Total</b>	<b>1,451</b>	<b>1,454</b>	<b>100%</b>	<b>4</b>
<b>Pauline Johnson C &amp; VS</b>	<b>1,374</b>	<b>866</b>	<b>63%</b>	<b>0</b>







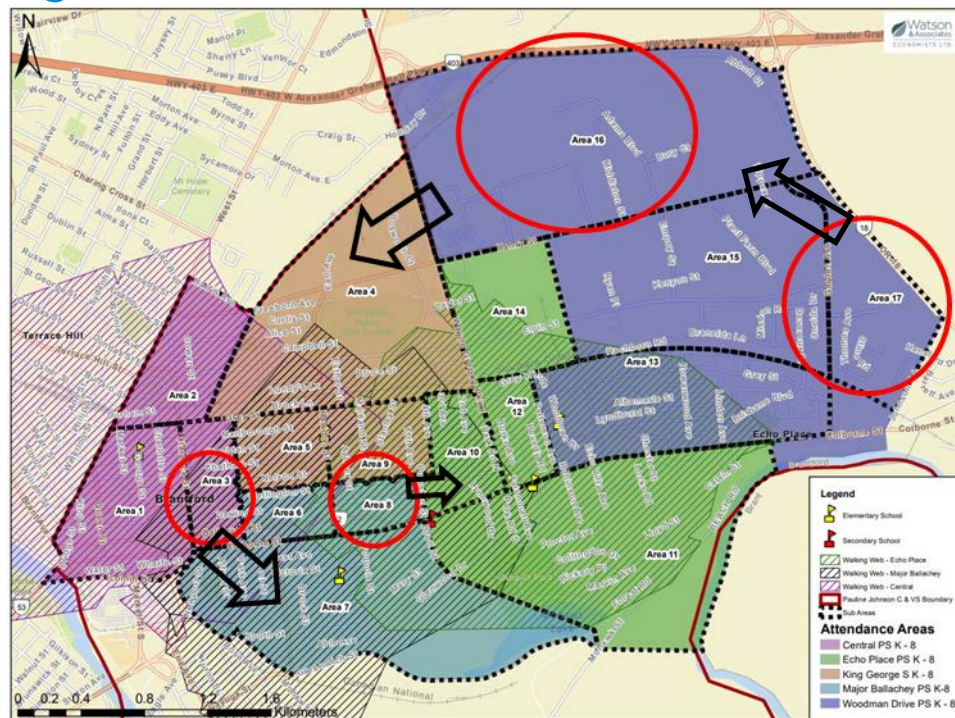


# Option 2a

## Option 1A + All Woodman and Central 7/8s go to Pauline Johnson C & VS

Current Conditions				
School	OTG	2022 Enrolment	Utilization	# of Portables (2022)
Central PS	190	240	126%	4
Echo Place PS	213	162	76%	0
King George PS	412	275	67%	0
Major Ballachey PS	400	322	81%	0
Woodman-Cainsville S	236	455	193%	9
<b>Total</b>	<b>1,451</b>	<b>1,454</b>	<b>100%</b>	<b>13</b>
<b>Pauline Johnson C &amp; VS</b>	<b>1,374</b>	<b>866</b>	<b>63%</b>	<b>0</b>

Proposed Conditions				
School	OTG	2022 Enrolment	Utilization	# of Portables (2022)
Central PS	190	157	83%	0
Echo Place PS	213	223	105%	1
King George PS	412	410	100%	2
Major Ballachey PS	400	309	77%	0
Woodman-Cainsville S	236	235	100%	1
<b>Total</b>	<b>1,451</b>	<b>1,334</b>	<b>92%</b>	<b>4</b>
<b>Pauline Johnson C &amp; VS</b>	<b>1,374</b>	<b>986</b>	<b>72%</b>	<b>0</b>

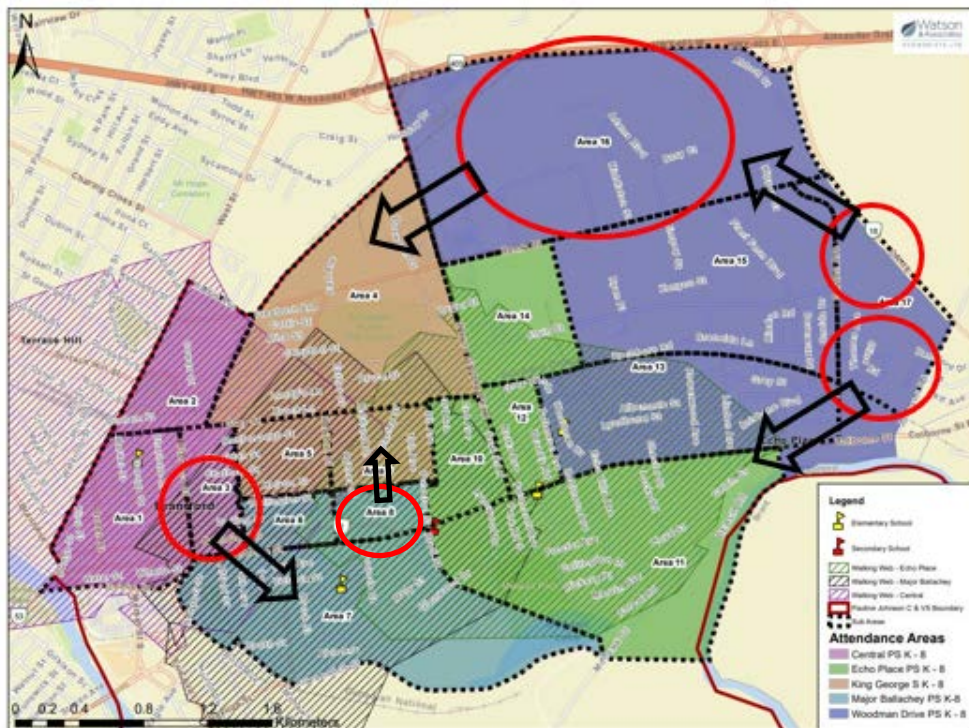


# Option 2b

## Option 1B + All Woodman and Central 7/8s go to Pauline Johnson C & VS

Current Conditions				
School	OTG	2022 Enrolment	Utilization	# of Portables (2022)
Central PS	190	240	126%	4
Echo Place PS	213	162	76%	0
King George PS	412	275	67%	0
Major Ballachey PS	400	322	81%	0
Woodman-Cainsville S	236	455	193%	9
<b>Total</b>	<b>1,451</b>	<b>1,454</b>	<b>100%</b>	<b>13</b>
<b>Pauline Johnson C &amp; VS</b>	<b>1,374</b>	<b>866</b>	<b>63%</b>	<b>0</b>

Proposed Conditions				
School	OTG	2022 Enrolment	Utilization	# of Portables (2022)
Central PS	190	162	85%	0
Echo Place PS	213	228	107%	1
King George PS	412	409	99%	0
Major Ballachey PS	400	300	75%	0
Woodman-Cainsville S	236	235	100%	1
<b>Total</b>	<b>1,451</b>	<b>1,334</b>	<b>92%</b>	<b>2</b>
<b>Pauline Johnson C &amp; VS</b>	<b>1,374</b>	<b>986</b>	<b>72%</b>	<b>0</b>



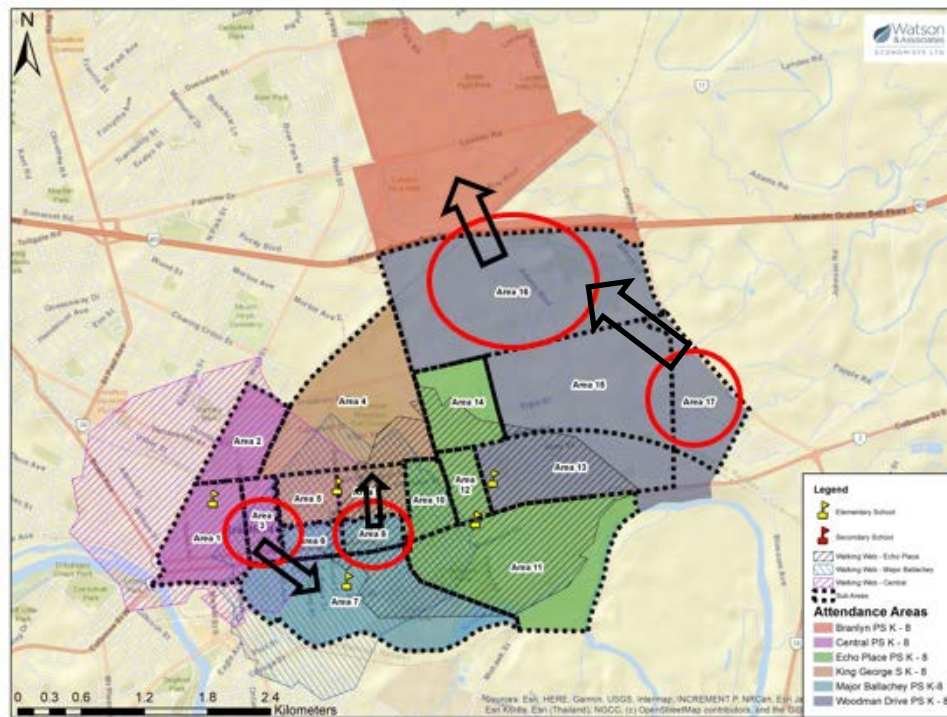


# Option 2c

## Option 1C + All Woodman and Central 7/8s go to Pauline Johnson C & VS

Current Conditions				
School	OTG	2022 Enrolment	Utilization	# of Portables (2022)
Branlyn PS	426	290	68%	0
Central PS	190	240	126%	4
Echo Place PS	213	162	76%	0
King George PS	412	275	67%	0
Major Ballachey PS	400	322	81%	0
Woodman-Cainsville S	236	455	193%	9
<b>Total</b>	<b>1,877</b>	<b>1,744</b>	<b>93%</b>	<b>13</b>
<b>Pauline Johnson C &amp; VS</b>	<b>1,374</b>	<b>866</b>	<b>63%</b>	<b>0</b>

Proposed Conditions				
School	OTG	2022 Enrolment	Utilization	# of Portables (2022)
Branlyn PS	426	425	100%	0
Central PS	190	157	83%	0
Echo Place PS	213	162	76%	0
King George PS	412	340	83%	0
Major Ballachey PS	400	305	76%	0
Woodman-Cainsville S	236	235	100%	0
<b>Total</b>	<b>1,451</b>	<b>1,624</b>	<b>112%</b>	<b>0</b>
<b>Pauline Johnson C &amp; VS</b>	<b>1,374</b>	<b>986</b>	<b>72%</b>	<b>0</b>





# Option 3

All 7/8 students go to Pauline Johnson C&VS

Current Conditions				
School	OTG	2022 Enrolment	Utilization	# of Portables (2022)
Central PS	190	240	126%	4
Echo Place PS	213	162	76%	0
King George PS	412	275	67%	0
Major Ballachey PS	400	322	81%	0
Woodman-Cainsville S	236	455	193%	9
<b>Total</b>	<b>1,451</b>	<b>1,454</b>	<b>100%</b>	<b>13</b>
<b>Pauline Johnson C &amp; VS</b>	<b>1,374</b>	<b>866</b>	<b>63%</b>	<b>0</b>

Proposed Conditions				
School	OTG	2022 Enrolment	Utilization	# of Portables (2022)
Central PS	190	205	108%	3
Echo Place PS	213	127	60%	0
King George PS	412	211	51%	0
Major Ballachey PS	400	257	64%	0
Woodman-Cainsville S	236	370	157%	6
<b>Total</b>	<b>1,451</b>	<b>1,170</b>	<b>81%</b>	<b>9</b>
<b>Pauline Johnson C &amp; VS</b>	<b>1,374</b>	<b>1,150</b>	<b>84%</b>	<b>0</b>

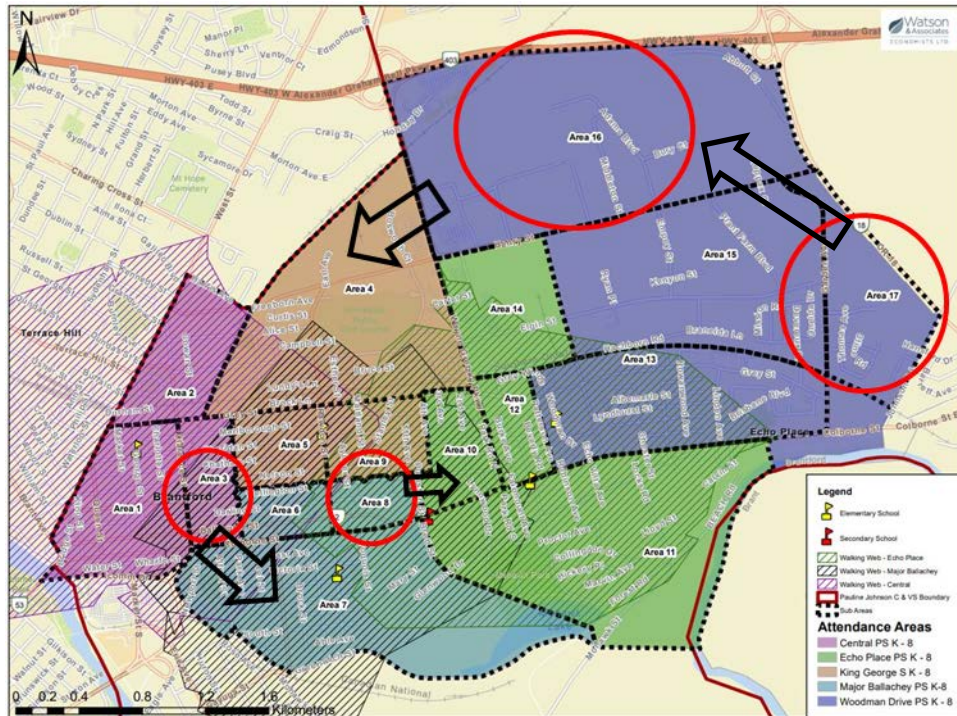


# Option 4a

## Option 1A + Grade 7/8s go to Pauline Johnson C & VS

Current Conditions				
School	OTG	2022 Enrolment	Utilization	# of Portables (2022)
Central PS	190	240	126%	4
Echo Place PS	213	162	76%	0
King George PS	412	275	67%	0
Major Ballachey PS	400	322	81%	0
Woodman-Cainsville S	236	455	193%	9
<b>Total</b>	<b>1,451</b>	<b>1,454</b>	<b>100%</b>	<b>13</b>
<b>Pauline Johnson C &amp; VS</b>	<b>1,374</b>	<b>866</b>	<b>63%</b>	<b>0</b>

Proposed Conditions				
School	OTG	2022 Enrolment	Utilization	# of Portables (2022)
Central PS	190	162	85%	0
Echo Place PS	213	173	81%	0
King George PS	412	346	84%	0
Major Ballachey PS	400	254	64%	0
Woodman-Cainsville S	236	235	100%	0
<b>Total</b>	<b>1,451</b>	<b>1,170</b>	<b>81%</b>	<b>0</b>
<b>Pauline Johnson C &amp; VS</b>	<b>1,374</b>	<b>1,150</b>	<b>84%</b>	<b>0</b>

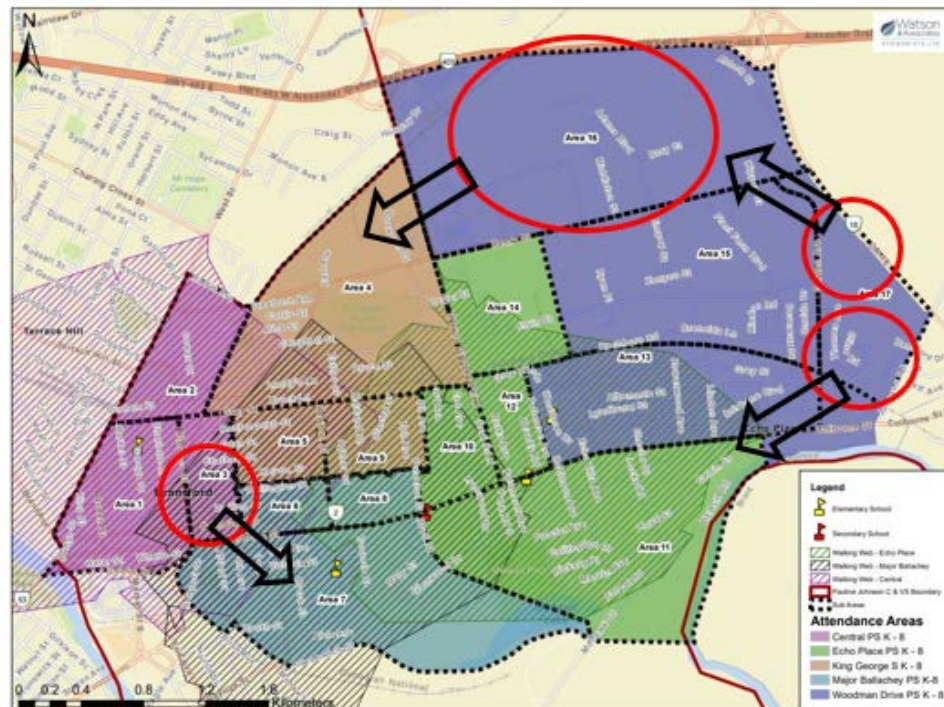




# Boundary Review Special Ad Hoc Committee: **Option 4b**

Current Conditions				
School	OTG	2022 Enrolment	Utilization	# of Portables (2022)
Central PS	190	240	126%	4
Echo Place PS	213	162	76%	0
King George PS	412	275	67%	0
Major Ballachey PS	400	322	81%	0
Woodman-Cainsville S	236	455	193%	9
<b>Total</b>	<b>1,451</b>	<b>1,454</b>	<b>100%</b>	<b>13</b>
<b>Pauline Johnson C &amp; VS</b>	<b>1,374</b>	<b>866</b>	<b>63%</b>	<b>0</b>

Proposed Conditions				
School	OTG	2022 Enrolment	Utilization	# of Portables (2022)
Central PS	190	162	85%	0
Echo Place PS	213	193	91%	0
King George PS	412	326	79%	0
Major Ballachey PS	400	254	64%	0
Woodman-Cainsville S	236	235	100%	0
<b>Total</b>	<b>1,451</b>	<b>1,170</b>	<b>81%</b>	<b>0</b>
<b>Pauline Johnson C &amp; VS</b>	<b>1,374</b>	<b>1,150</b>	<b>84%</b>	<b>0</b>

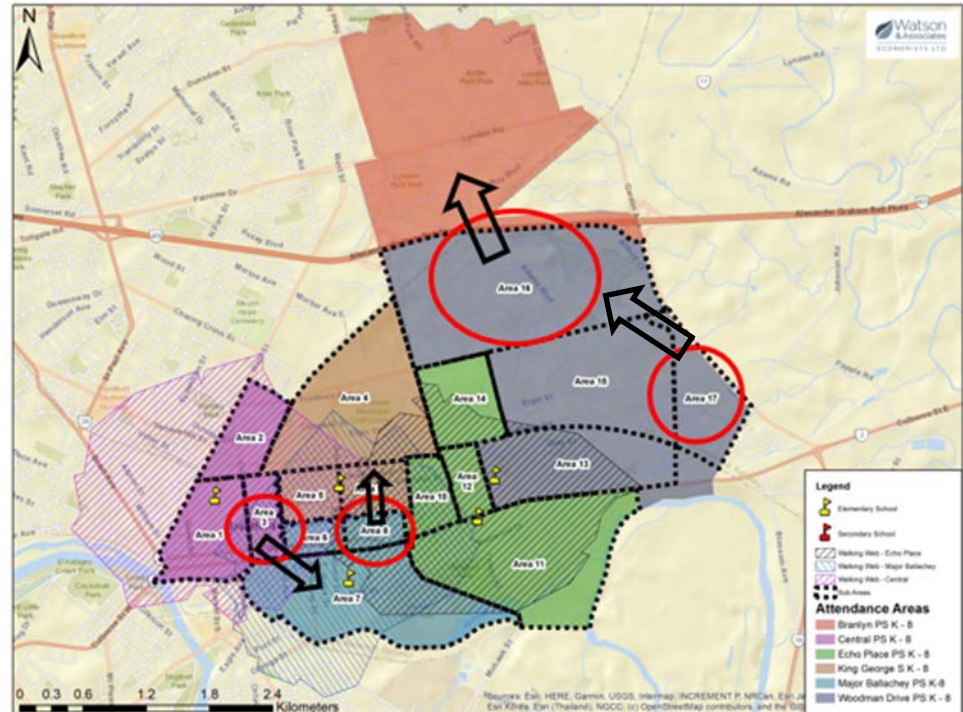




# Boundary Review Special Ad Hoc Committee: **Option 4c**

Current Conditions				
School	OTG	2022 Enrolment	Utilization	# of Portables (2022)
Branlyn PS	426	290	68%	0
Central PS	190	240	126%	4
Echo Place PS	213	162	76%	0
King George PS	412	275	67%	0
Major Ballachey PS	400	322	81%	0
Woodman-Cainsville S	236	455	193%	9
<b>Total</b>	<b>1,877</b>	<b>1,744</b>	<b>93%</b>	<b>13</b>
<b>Pauline Johnson C &amp; VS</b>	<b>1,374</b>	<b>866</b>	<b>63%</b>	<b>0</b>

Proposed Conditions				
School	OTG	2022 Enrolment	Utilization	# of Portables (2022)
Branlyn PS	426	425	100%	0
Central PS	190	162	85%	0
Echo Place PS	213	127	60%	0
King George PS	412	257	62%	0
Major Ballachey PS	400	254	64%	0
Woodman-Cainsville S	236	235	100%	0
<b>Total</b>	<b>1,877</b>	<b>1,460</b>	<b>78%</b>	<b>0</b>
<b>Pauline Johnson C &amp; VS</b>	<b>1,374</b>	<b>1,150</b>	<b>84%</b>	<b>0</b>





## Discussion Topics/Questions

- Senior Elementary Enrolment In A Secondary School
- Distances To Surrounding Schools
- Preferred Option(s)
- Other?





Please submit comments and questions to  
[planning@granderie.ca](mailto:planning@granderie.ca)

Thank you!